



Black History Month



The month of February is Black History Month — a time to celebrate the diversity, history and culture of Black people in Canada.

Join us in amplifying and honouring Black voices throughout February and beyond!

“Black History Month must be more than just a month of remembrance; it should be a tribute to our history and reminder of the work that lies in the months and years ahead.” —Marty Meehan, former US Rep and current President of University of Massachusetts

Resources for Mentors Around Race, Inclusion, & Cultural Respect

AMP in the Community



On January 30, AMP attended Skill Quest: Champions of Careers' CTF/CTS! It was a great opportunity to connect with teachers, share our resources, and promote mentoring in schools.

AMP's New & Updated Mentoring in Schools Resources



We're all stocked up and will be sharing our updated resources at upcoming Teachers' Conventions!

This month, catch us at North Central Teachers' Convention (Feb 8-9) and Palliser Teachers' Convention (Feb 22-23).

You will also find us at Mighty Peace Teachers' Convention from March 8-9.

Women's Advisory Voice of Edmonton - Equity In Motion



AMP's Lead of Community Engagement, Sarah Chan, was honoured to moderate an inspiring panel organized by [Women's Advisory Voice of Edmonton \(WAVE\)](#) and our partner, [YWCA Edmonton](#). It was a captivating discussion on mentorship, allyship, and the journey of building resilience to keep moving forward in connected community.

[Here is a link to watch the YWCA x WAVE panel](#)

Evaluation Moment

Evaluation Moment

Supports for using evaluation to enhance your programming

11

Parts to Evaluation: Arts-Based Data Collection Methods

Qualitative data collection methods allow for a contextually responsive approach to evaluation. By providing opportunities to collect a range of data, qualitative methods can promote cultural humility, stimulate intellectual and social dialogue, and generate meaningful outcomes. One example are arts-based methods to data collection.

Arts-based methods are a collaborative way to communicate and gather meaningful information for children and youth in research and evaluation. Through the use of imagery, colour, and different materials, children are able to express their understanding of themselves or different topics in a unique way.

FUN FACT!

Arts-based data collection is a broad category, with a variety of methods to choose from. This could include the use of comics, photography, drawing, or even performing arts!



Resources:

- [Rewards from thinking outside the box... are endless!](#)
- McLeod, H. S. (2018). Review of “Good Question: Arts-based approaches to collaborative research with children and youth” edited by Michael J. Emme and Anna Kirova (2017). *Art/Research International: A Transdisciplinary Journal*, 3(2), 373-380.

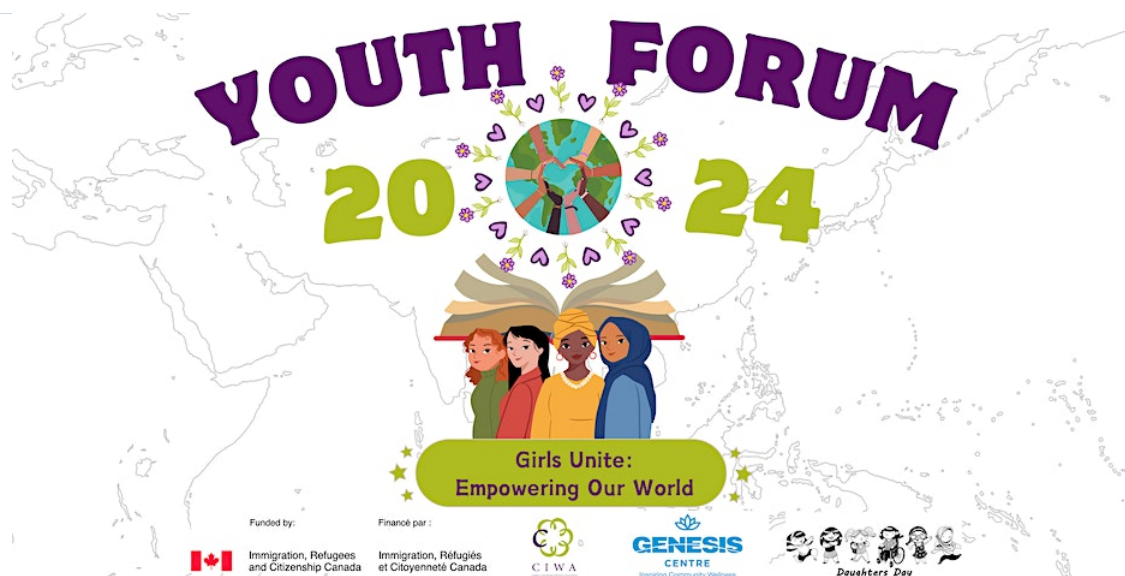
Black Children and Youth Can Benefit From Focused Research on Protective Community Resources



The role of protective community resources (PCRs)—defined as community-level characteristics, conditions, or assets that buffer the effects of risks on children and youth, thereby supporting their development —has received significant and sustained attention in a variety of fields, from education and psychology to public health and social work. The result is a broad body of research that describes how the absence or presence of PCRs can either place children and youth at risk for negative developmental outcomes or promote their flourishing and resilience.

[Continue Reading](#)

Upcoming Events



CIWA's Youth Forum 2024 - Girls Unite: Empowering Our World

Join CIWA at the [The Genesis Centre, Community Gymnasium](#) on **Thursday, February 15, 2024** for an exciting event that aims to empower young girls . This in-person forum will bring together inspiring speakers, interactive booths and activities.

Get ready to connect with like-minded individuals, enjoy the cultural performances, play fun games, paint our biggest collaborative mural, express your thoughts in our #Wheretoturn freedom wall, win raffle and door prizes, get swags, and more!

[Register Here](#)



Combatting White Saviourism - The Mentoring Partnership of Southwestern Pennsylvania

Mentoring relationships and programs have the power to reproduce racial inequity. Mentors and mentoring programs have a moral obligation to do no harm to the youth and families engaged in their mentoring relationships and programs. In this workshop, participants explore what white saviorism looks like as well as the harmful impact it has on youth. Participants will develop the ability to recognize white saviorism in mentoring relationships and programs and explore concrete strategies to combat its harmful effects.

Sessions are 1.5-hours in length and done virtually. You must be registered to attend.

[Register Here](#)

Stay updated on upcoming events!

[View Event Calendar](#)

Does your agency have an upcoming event or a great story?

The Alberta Mentoring Partnership will help you amplify it!

Submit Your Event



Copyright © 2024 Alberta Mentoring Partnership, All rights reserved.

Want to change how you receive these emails?
You can [update your preferences](#) or [unsubscribe from this list](#).